



[www.tongdamachine.com](http://www.tongdamachine.com) 🔍

欲了解更多公司详情，请登录官网或扫二维码查询。

# TONGDA

## MACHINE

ISO9001 CE

### 中空吹塑设备解决方案 同大一站式智造

TONGDA—PROVIDES ONE-STOP INTELLIGENT  
MANUFACTURING SOLUTION FOR PLASTIC EXTRUSION BLOW MOULDING MACHINE



苏州同大机械股份有限公司  
SUZHOU TONGDA MACHINERY CO., LTD.

地址：江苏省苏州市张家港市凤凰大道21号  
电话：+86-512-56370130（内贸）  
+86-512-56370112（外贸）  
+86-512-56370137（售后服务）  
邮箱：info@tongdamachine.com  
邮编：215614

Add: No. 21 Fenghuang Avenue, Suzhou City, Jiangsu Province, China  
TEL: +86-512-56370130 (China)  
+86-512-56370112 (Overseas)  
+86-512-56370137 (After-sales service)  
Email: info@tongdamachine.com  
Post code: 215614

本产品手册仅供参考之用，一切以实物及产品说明为准，同大产品均有各项国家专利，盗版必究。  
版本号 Edition No.:20240701





## ABOUT TONGDA

### 关于同大

苏州同大机械股份有限公司，始创于1999年，是一家以塑料中空成型设备为核心的整厂智能制造解决方案提供商。公司连续十三年被评为塑料机械挤出吹塑中空成型装备行业前三强，是中国塑料机械工业协会副会长单位、国家级专精特新“小巨人”企业。

公司现有三个生产基地，总占地面积约10万平方米，年生产能力超1200台套。公司产品在技术创新、研发智造等方面具有明显的优势，截至2023年，公司主持起草2项国家标准和1项行业标准，参与3项国家标准制定。

25年来，同大机械已为全球100多个国家和地区提供了9000多台(套)各种规格的挤吹中空成型设备，主要应用于化工、日化、汽车、植保、食品包装、户外休闲、医疗、物流仓储、光伏、校具、交通设施等主要行业。截止2023年，我司在全球已建立完善的销售服务网络——海外17家，国内15家销售服务中心，为当地客户提供7\*24小时专业服务，让同大客户买得放心，用得舒心。

同大机械将秉承“同心合力、一起壮大”的企业司训，致力于持续为全球客户提供定制化产品与服务，共同创造价值。



Suzhou Tongda Machinery Co., Ltd. founded in 1999, is a whole plant intelligent manufacturing solutions provider in blow moulding machinery field. We have been rated as the top three plastic machinery extrusion blow molding equipment industry for 13 consecutive years. We are the vice president unit of China Plastic Machinery industry Association and the national specialized special new "little giant" enterprise.

Till 2023, we have three manufacturing plants, with a total area of more than 100,000 square meters and an annual production capacity of above 1200 sets. Besides, there are about 100 persons of our R&D team, which guaranteed Tongda machines with edge advantages in technological innovation, R&D and intelligent manufacturing. By 2023, we has presided over the drafting of two national standards and one industry standard, and participated in the formulation of three national standards.

During the past 25 years, we have provided over 9000 sets of various specifications of extrusion blown hollow forming equipments to over 100 countries and regions worldwide, which are mainly used in chemical industry, daily chemical industry, automobile, crop protection, food packaging, outdoor leisure, medical industry, logistics warehousing industry, photovoltaic industry, transportation facilities and other major industries. Till 2023, we have established a comprehensive sales and service network across the world — 17 overseas and 15 domestic sales and service centers, which provide 7\*24 hours professional service to local customers.

With value "work together, grow together", we dedicate to provide customized products and services for global customers, and create a better future together.



# HONOR

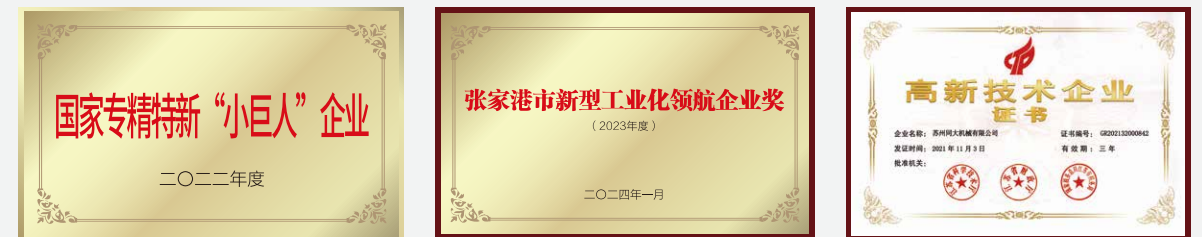
同大荣誉

荣誉源于用心。

每一份认可的资质证书都是凝聚同大奋力拼搏的结晶，每一份荣誉都是一个路标，一次历程。我们也将以每次荣誉为起点，不断锐意进取，超越自我。

Honor comes from heart.

Each qualification certificate is the crystallization of Tongda's hard work, a road sign and a process. We will also take each honor as the starting point, and strive to higher in the future.





**EQUIPMENT**

同大加工

**BUILD AN EXPLORER IN MECHANICAL  
EQUIPMENT INDUSTRY**

同大机械创立25年来，始终坚持“质量是企业立足之本”，专注于塑料中空成型技术领域，严把加工过程的每一道关口，力求以一流质量的产品应对激烈的市场竞争，为客户共同创造价值。

同大凭借精密的设备制造工艺、创新技术、严格的质量管控流程，确保设备质量。



During the past 25 years, Tongda Machinery has always adhered to the principle of "quality is the foundation of the enterprise", focusing on the field of plastic hollow forming technology, strictly controlling every step of the processing process, and striving to respond to fierce market competition with first-class quality products, creating value for customers together.

Tongda ensures product quality with its precision machine manufacturing process, innovative technology, and strict quality control process.



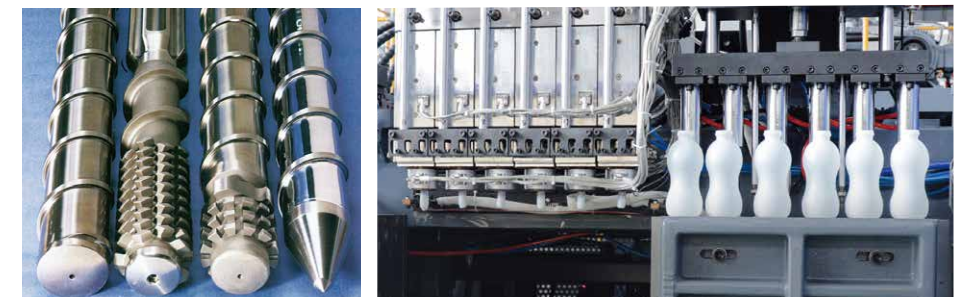
智能化  
Intelligent



数字化  
Digitalize



低碳化  
low-carbon





## HT SERIES (2-30L)

FULLY AUTOMATIC EXTRUSION BLOW MOULDING MACHINE

HT系列 (全自动吹瓶机)

### 性能和优点

- 适用于生产20ml-30L各类塑料中空制品;
- 采用高产量挤出系统, 连续式模头;
- 选配液位线挤出系统;
- 选配液压伺服控制系统。

### PERFORMANCE AND ADVANTAGES

- Suitable for the production of 20ml-30L plastic hollow products;
- Continuous extrusion die head with high output extrusion system;
- Liquid Level Line extrusion system option;
- Hydraulic Servo Control System option.

**HT II-2L (全自动吹瓶机)**FULLY AUTOMATIC  
EXTRUSION BLOW MOULDING MACHINE**HT-5L (全自动吹瓶机)**FULLY AUTOMATIC  
EXTRUSION BLOW MOULDING MACHINE

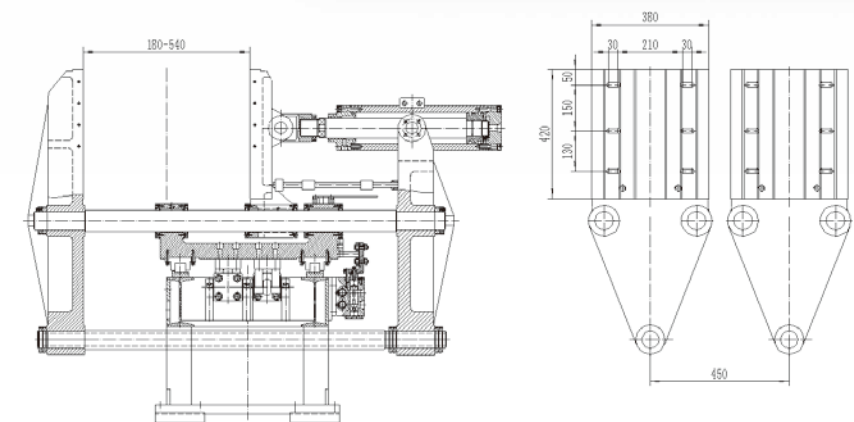
## HTSII-5L / 12L

FULLY AUTOMATIC EXTRUSION BLOW MOULDING MACHINE

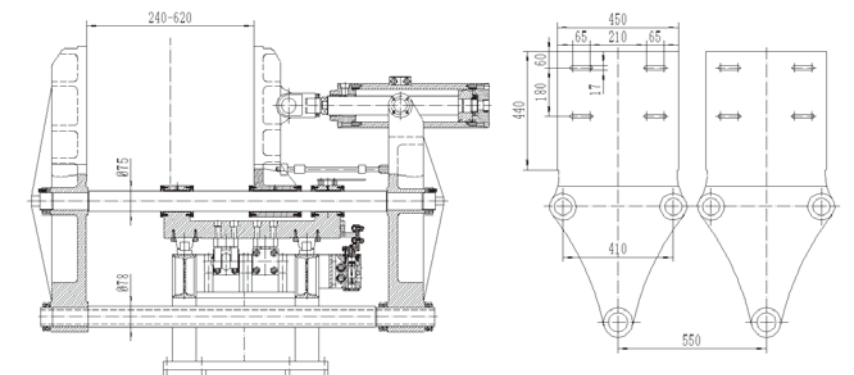
HTS系列 (全自动吹瓶机)



HTS II-5L



HTS II-12L



## HS SERIES (5-30L)

FULLY AUTOMATIC EXTRUSION BLOW MOULDING MACHINE

**HS系列 (全自动吹瓶机)****性能和优点**

- 适用于生产5-30L各类塑料中空制品生产;
- 采用高产量挤出系统, 连续式模头, 移模比例伺服控制;
- 标配伺服液压控制系统;
- 选配液位线挤出系统。

**PERFORMANCE AND ADVANTAGES**

- Suitable for the production of 5-30L plastic hollow products;
- Continuous extrusion die head with high output extrusion system, mold moving proportional servo control system;
- Standard Hydraulic servo control system;
- Liquid Level Line extrusion system option.

**HSII-5L (全自动吹瓶机)**FULLY AUTOMATIC  
EXTRUSION BLOW MOULDING MACHINE

## HSE SERIES (5-30L)

FULLY ELECTRICAL SERIES

**HSE系列 (全电动系列)****性能和优点**

- 15寸触摸屏, 可监控主机及各辅机;
- 采用Modbus/TCP通讯使主、辅机互联互通;
- 集成有伺服壁厚控制系统;
- 具备物联网功能, 实现云端查看机器生产状态。

**PERFORMANCE AND ADVANTAGES**

- 15 inch touch screen, which can monitor the host and each auxiliary machine;
- Modbus/TCP communication is adopted to make the main and auxiliary machines interconnected;
- The servo wall thickness control system is integrated;
- It has the function of Internet of Things, enabling the cloud to view the machine production status.

**HSEII-5L (全电动吹瓶机)**FULLY ELECTRICAL  
EXTRUSION BLOW MOULDING MACHINE



## TDB-80F/250F

FULLY AUTOMATIC EXTRUSION BLOW MOULDING MACHINE

TDB系列 (全自动吹塑中空成型机)

TDB-80F (全自动吹塑中空成型机)

FULLY AUTOMATIC  
EXTRUSION BLOW MOULDING MACHINE

TDB-250F (全自动吹塑中空成型机)

FULLY AUTOMATIC  
EXTRUSION BLOW MOULDING MACHINE

## TDB-25APC

DRINKING WATER BOTTLE BLOWING MACHINE

TDB系列 (PC5加仑、3加仑纯净水桶、灯罩专用吹塑中空成型机)

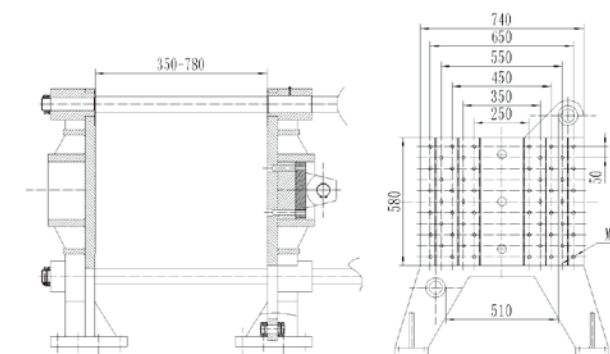


### 性能和优点

- 适用于生产2-5加仑PC材料吹塑制品;
- 采用高产呈挤出系统, 连续式模头。

### PERFORMANCE AND ADVANTAGES

- Suitable for producing 2-5 gallon 10-25liter PC material blow product;
- Continuous extrusion die head with high output extrusion system.

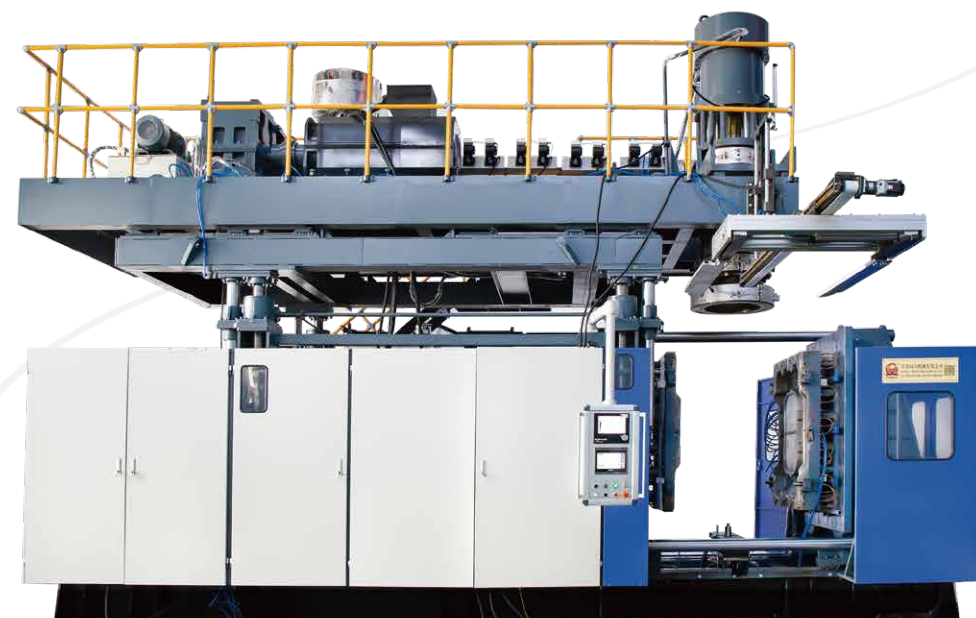


## TDB-1200F/HT-1500L

FULLY AUTOMATIC EXTRUSION BLOW MOULDING MACHINE

大型中空成型机

### TDB-1200F

FULLY AUTOMATIC  
EXTRUSION BLOW MOULDING MACHINE

### HT-1500L

FULLY AUTOMATIC  
EXTRUSION BLOW MOULDING MACHINE

## TDW-160EF/350F

FULLY AUTOMATIC TIE-BARLESS EXTRUSION BLOW MOULDING MACHINE (ACCUMULATOR)

TDW系列（无拉杆中空成型机）



### 性能和优点

- 适用于生产各种托盘、桌面板、路障、广口桶等大型中空吹塑制品；
- 采用高产量挤出系统，储料式模头；
- 标配伺服液压控制系统。

### PERFORMANCE AND ADVANTAGES

- Suitable for the production of all kinds of pallets, table panels, roadblocks, buckets and other large hollow blow molding products;
- Accumulator type of head with high output extrusion system;
- Standard hydraulic servo system.

